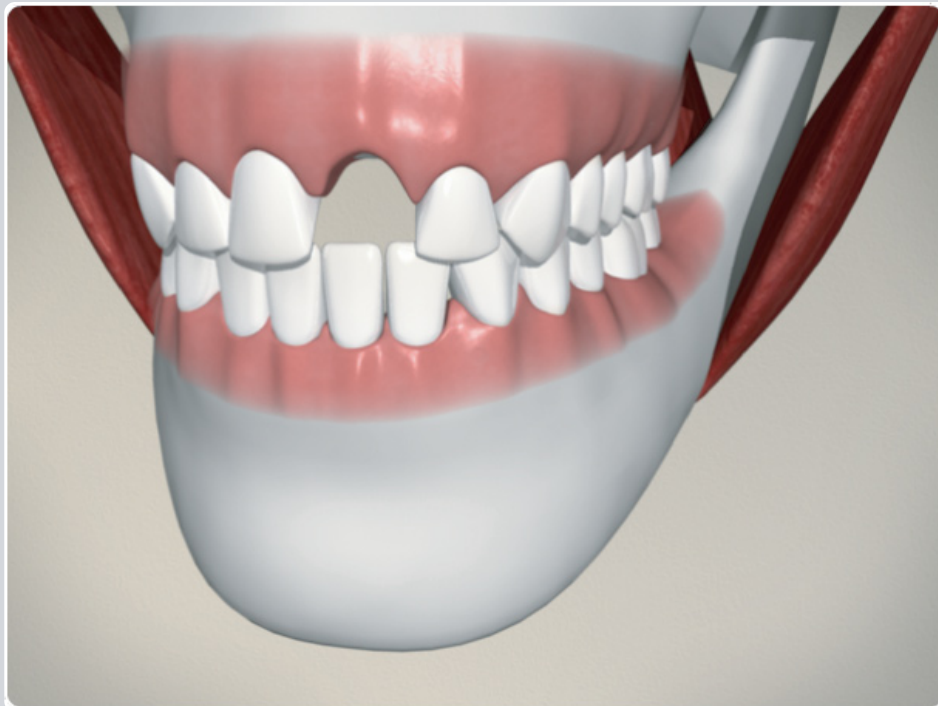
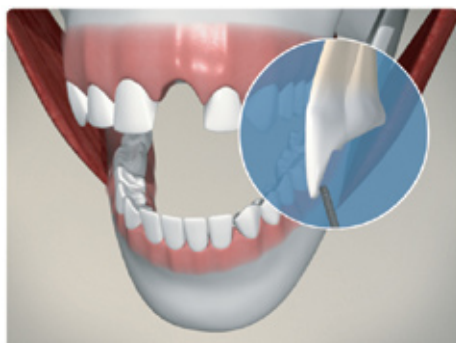
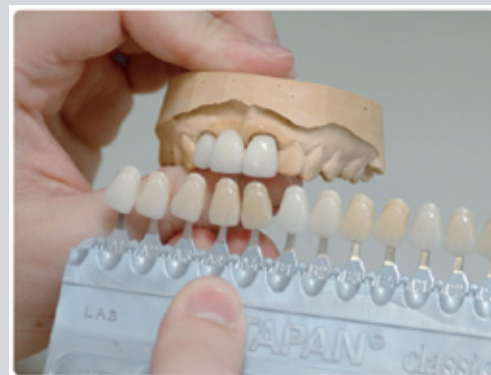


Single Missing Tooth – Maryland Bridge



When a front tooth is missing, one restoration option is the maryland bridge.

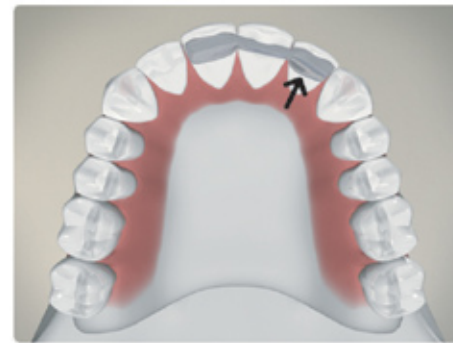
A color guide is used to match the color of the bridge to your teeth.



Then the backs of the adjacent teeth are prepared for the restoration. A small layer of enamel is removed. This is a painless procedure, as we do not reach the nerve of the tooth.



Meanwhile, an impression is taken and sent to a dental lab. To make the restoration, the lab technician produces models based on the impression in order to create a bridge that will function properly and fit perfectly in your mouth.



When your final bridge is ready it is cemented in place. The back of the teeth will show a thin silver "wing" that anchors the bridge to the adjacent teeth. The wing will not be visible when you smile.

Notes:
