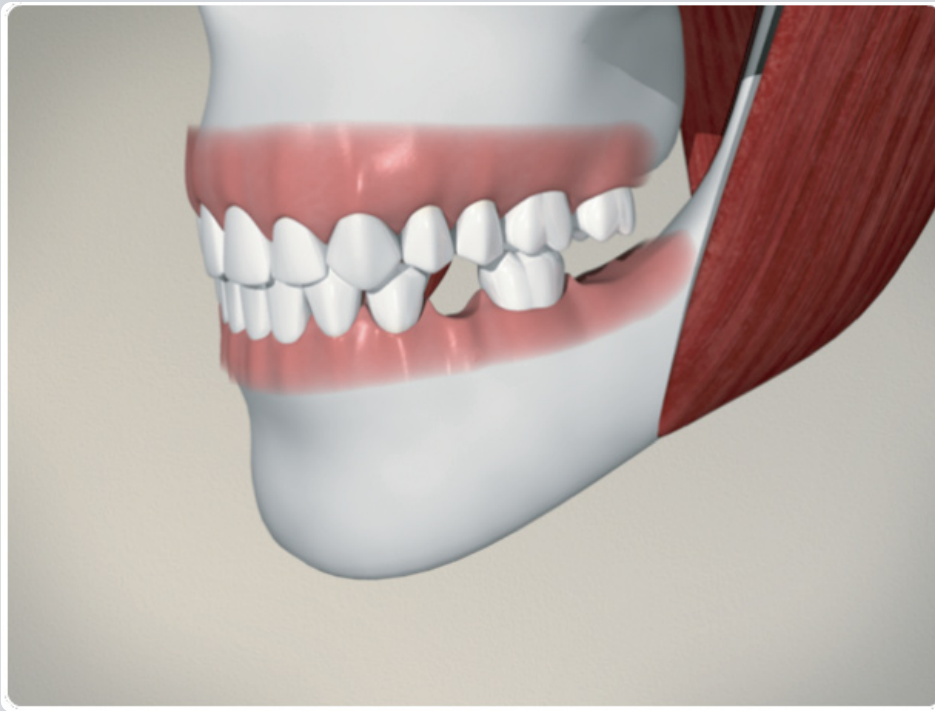
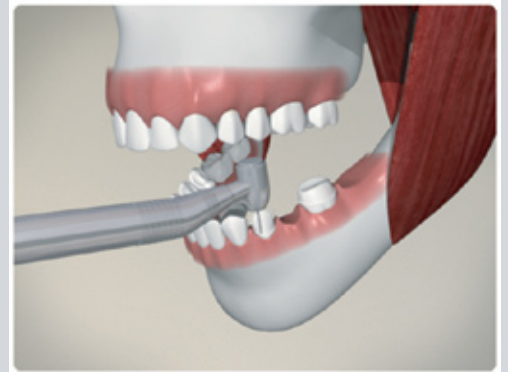


Single Missing Tooth – Cantilever Bridge



In certain missing tooth situations a bridge restoration must be cantilevered. In this example, there is one missing tooth between two healthy teeth, and a second missing tooth at the back of the mouth.

A color guide is used to match the color of the bridge to your teeth. Then the teeth on each side of the space are prepared to accept the bridge. This is a painless procedure, as we do not reach the nerve of the tooth.



A temporary bridge is made and inserted while your final bridge is custom made at a dental lab. Without the temporary bridge, your teeth will attempt to equalize space by shifting. You should always contact your dentist if your temporary becomes loose or falls out.



Meanwhile, an impression is taken and sent to a dental lab. To make the restoration, the lab technician produces models based on the impression in order to create a bridge that will function properly and fit perfectly in your mouth.



When your final bridge is ready, the temporary is removed and the final bridge is cemented in place. Your dentist will be able to answer any other questions you have about this procedure.

Notes:
