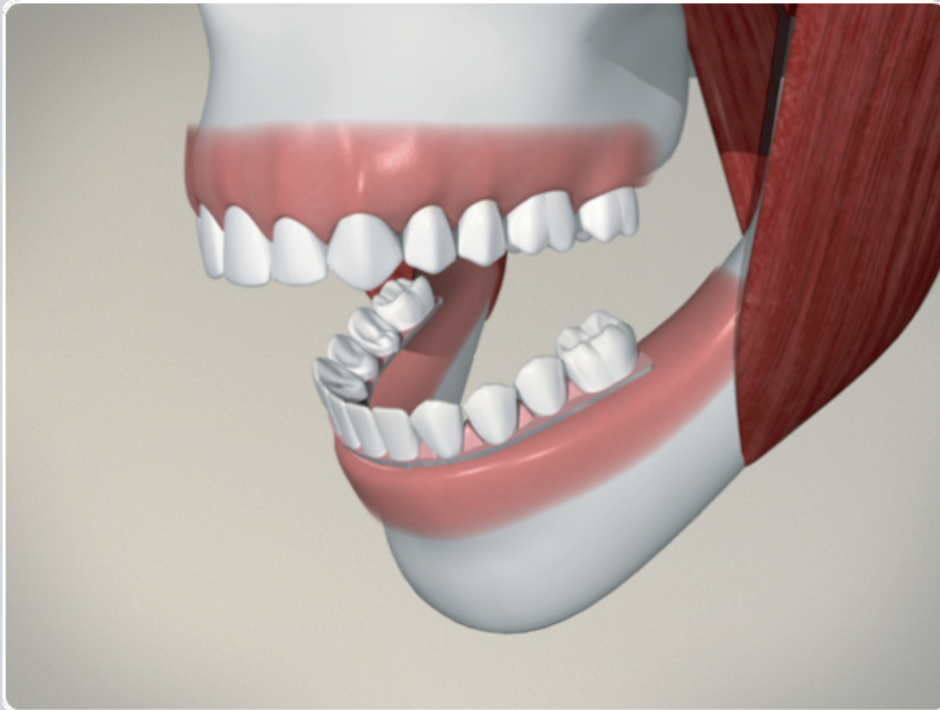
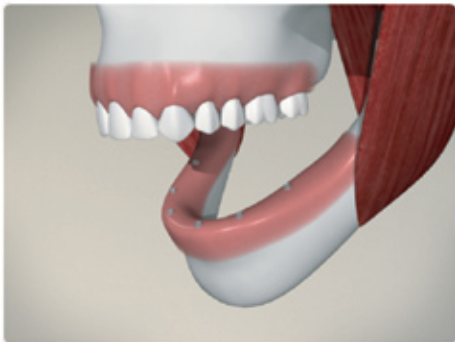
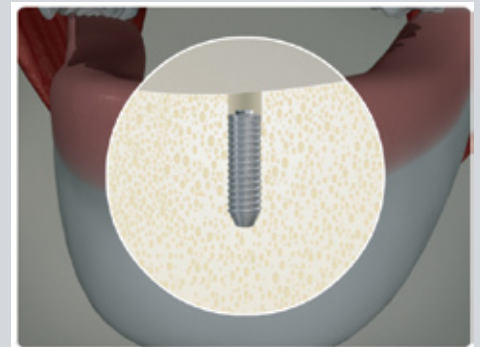


Multiple Missing Teeth – Implant Supported Denture



When multiple teeth are missing, one restoration option is an implant supported denture.

To begin the implant restoration, an implant and healing cap are placed and the bone is allowed to heal, and integrate the implant.



Next an abutment is placed and the gums are left to heal while your crown is made. Impressions are taken to ensure that the denture framework fits in your mouth perfectly.



Your denture is then custom made at the dental lab. At several stages in the development process, it will be trial fitted and adjusted to fit your mouth perfectly. Your dentist will tell you how long this takes, and schedule appointments to continue the procedure.



Your final implant supported denture is then inserted in your mouth and fixed to the implants with screws.

Notes:
