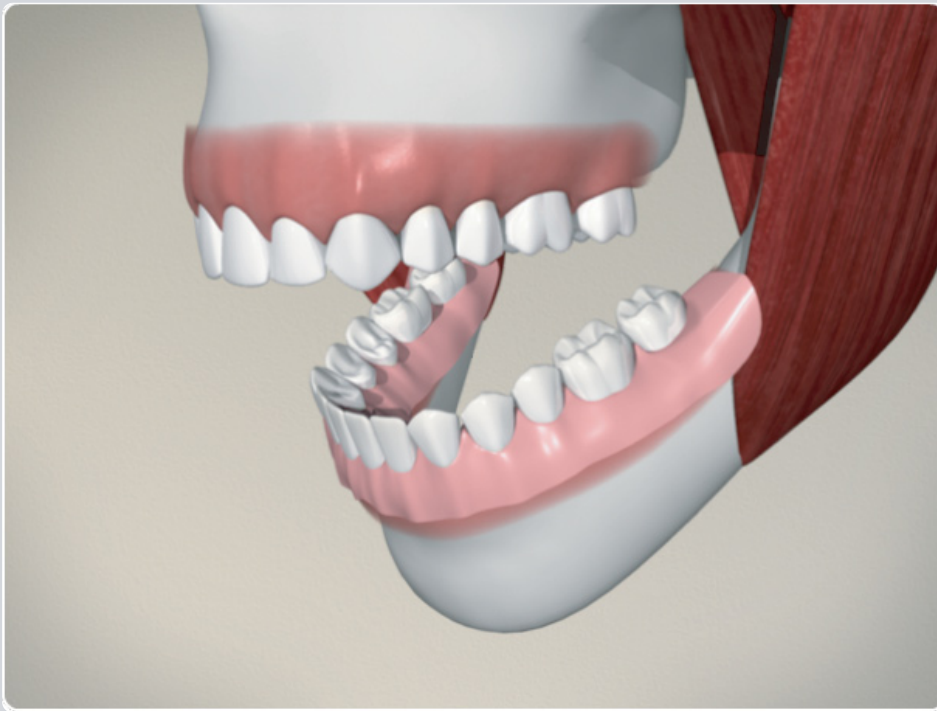
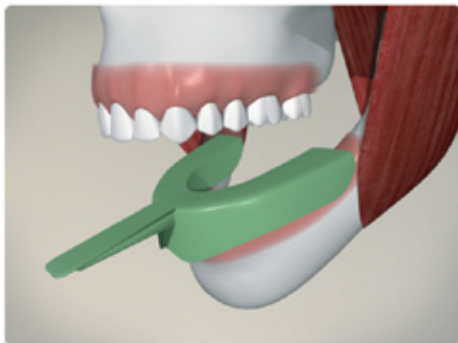


Multiple Missing Teeth – Full Denture



When multiple teeth are missing, one restoration option is a full denture.



To begin this restoration, impressions are taken to ensure that the denture fits in your mouth perfectly.



Your denture is then custom made at the dental lab. At several stages in the development process, it will be trial fitted and adjusted to fit your mouth perfectly. Your dentist will tell you how long this takes, and schedule appointments to continue the procedure.



Your final denture is placed in your mouth and any final adjustments are made. You can remove this denture as needed, based on the advice your dentist provides for cleaning and other considerations.

Notes:
