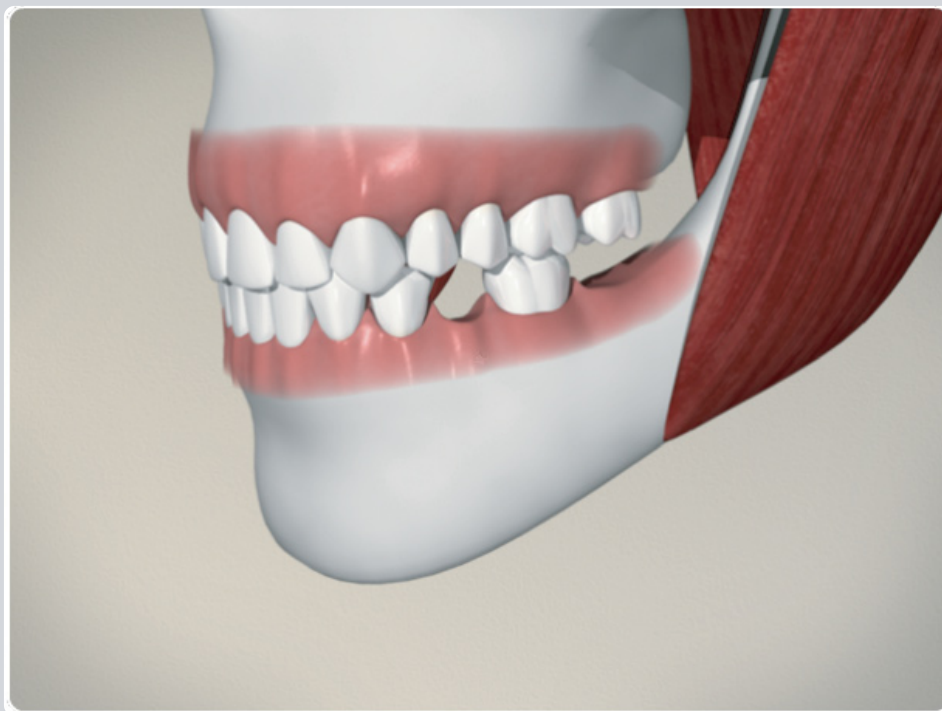


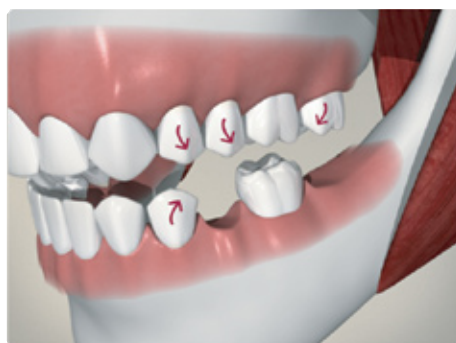
# Multiple Missing Teeth – Do Nothing



When multiple teeth are missing, it is important to address the situation to avoid complications. This module explains what can occur if no action is taken to correct missing teeth.



When all teeth are present in the mouth, each tooth helps to maintain the position of the adjacent teeth.



Missing teeth create a spaces that the surrounding teeth will move toward as they attempt to equalize the space. Your teeth become more prone to decay and periodontal disease as food is more easily trapped between displaced teeth.



Your dentist will decide on the most appropriate solution to maintain space, such as a bridge, denture, or implant.

Notes:

---

---

---