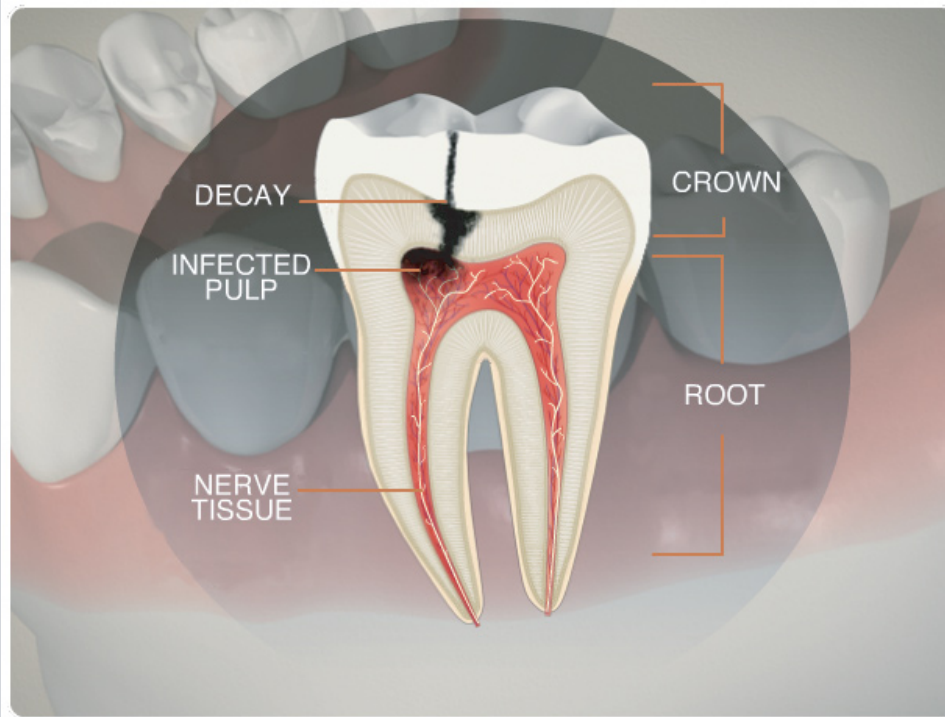


# Decay – Root Canal – Direct Post & Core

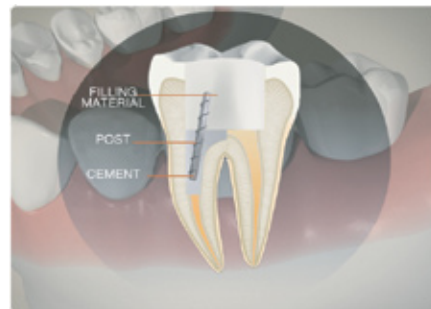


You can see from this cross-sectional view that decay has penetrated to the pulp of the tooth. When a tooth is significantly decayed, meaning the pulp is damaged, a root canal is required. The steps below demonstrate the direct post and core restoration used in conjunction with a crown restoration.

Your dentist or hygienist, will be able to answer any other questions you have about this procedure.



1. GUTTA-PERCHA REPLACES THE PULP TO KEEP TOOTH STRONG.



2. THE DIRECT POST IS CEMENTED IN PLACE.



3. THE TOOTH IS PREPARED FOR THE CROWN.



4. THE CROWN IS CUSTOM MADE AT THE DENTAL LAB.



5. FINAL CROWN IS CEMENTED IN PLACE.