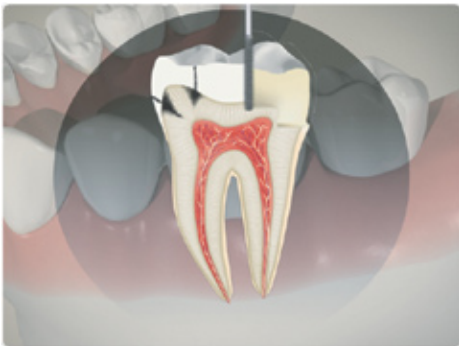


For a tooth with slight decay that affects at least one cusp, an onlay restoration can be used to restore the tooth.

In this example, you can see that the decay is through the tooth's enamel, damaging a cusp, but has not progressed all the way to the pulp chamber.

It is important to receive timely dental attention to prevent the decay from spreading further inside the tooth.



To begin the restoration, the decay and any affected cusps are carefully removed to prepare for the onlay. Impressions are taken to model the exact shape required for the onlay. A temporary filling is placed until the final onlay is ready.



Meanwhile, the impression is sent to a dental lab. To make the restoration, the lab technician produces models based on the impression in order to create an inlay that will function properly and fit perfectly in your mouth.



When the final inlay is ready, the temporary filling is removed, and the final onlay restoration is cemented in place. Your dentist or hygienist, will be able to answer any other questions you have about this procedure.

Notes:

---

---

---