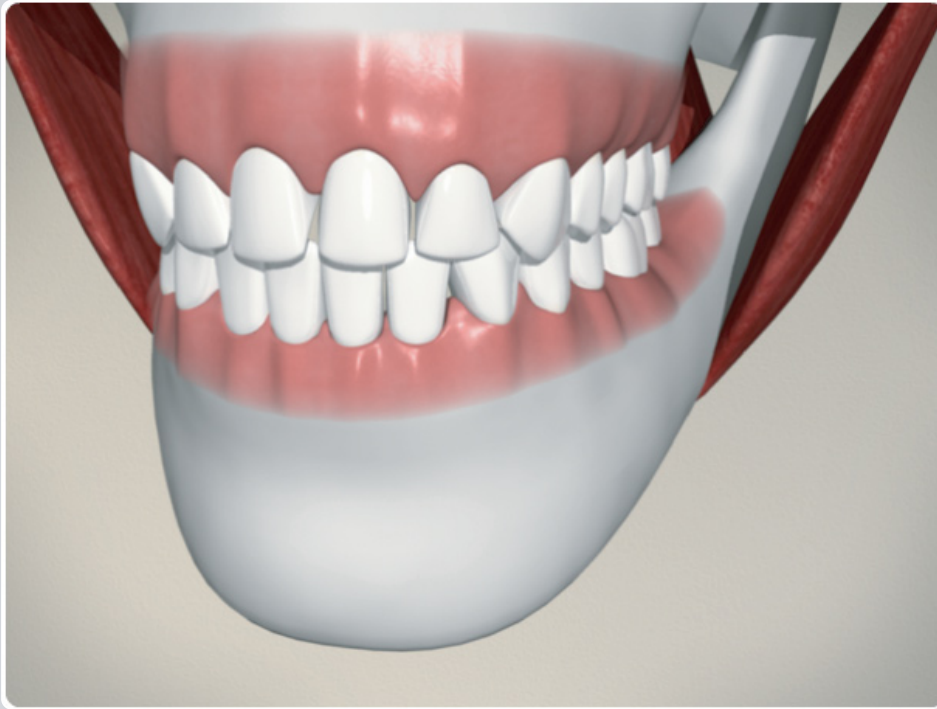


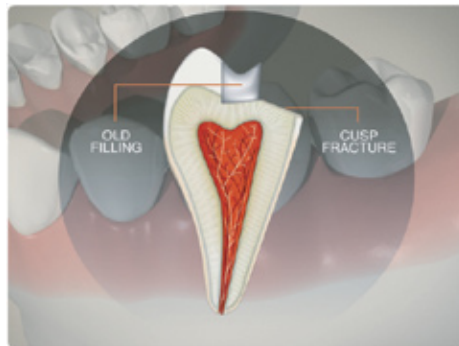
Cusp Fracture - Filling



When a tooth has a small cusp fracture it can often be repaired with a filling.

Often these types of fractures occur near fillings that have been in place for a long time as shown in this illustration.

To restore the affected tooth, it is first prepared to accept the filling. During the same visit to your dentist, the filling is placed on the affected tooth.



Notes:
