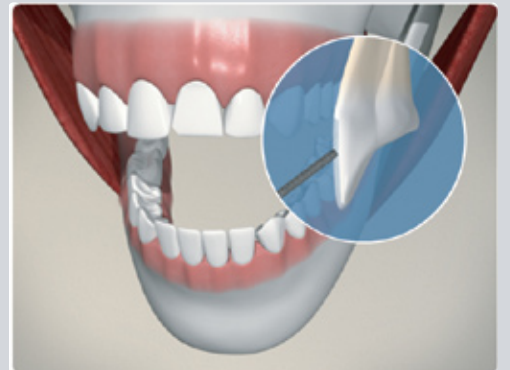


When an undesired space exists between front teeth, a porcelain veneers can be used to fill in the gap.

The affected teeth are first prepared by removing a thin layer of enamel.



A shade guide is used to determine the exact color for the veneer and impressions are taken to ensure that the veneer fits correctly in your mouth.



If necessary, your dentist will make and insert a temporary veneer. Meanwhile, your final veneer is custom made at a dental lab, to fit perfectly in your mouth.



To complete the restoration, the temporary veneeres are removed and the final veneers are cemented in place.

Notes:

---

---

---